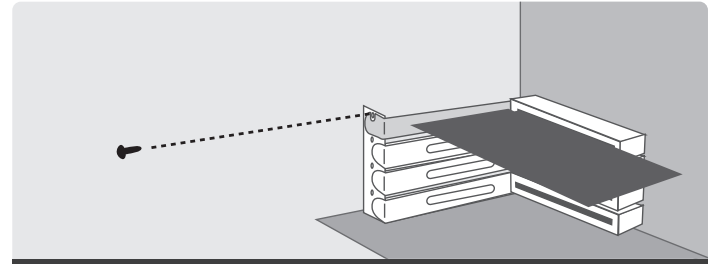
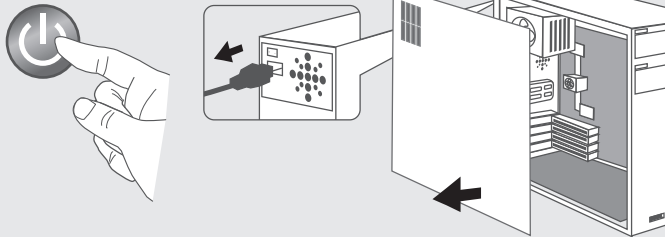


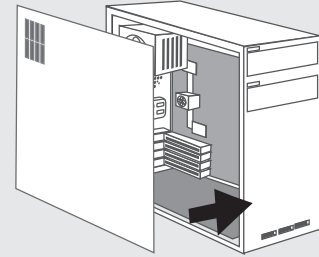
1. Verify the package contents.



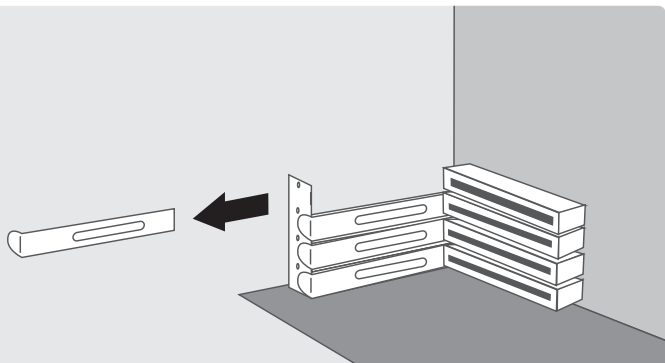
5. Insert the network expansion card into the PCIe slot, be sure to fasten the bracket as documented in the computer case manufacturer's documentation.



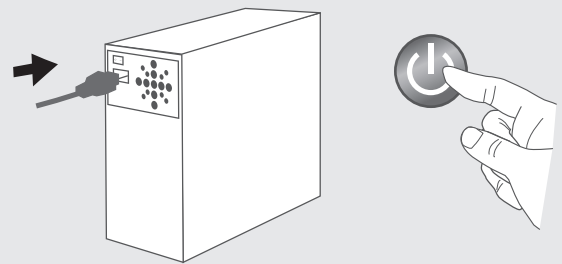
2. Turn off Computer System, unplug power and remove the cover of the Computer System



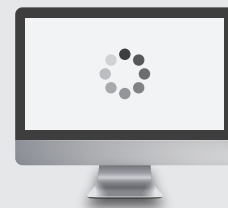
6. Place the case cover back on the computer system.



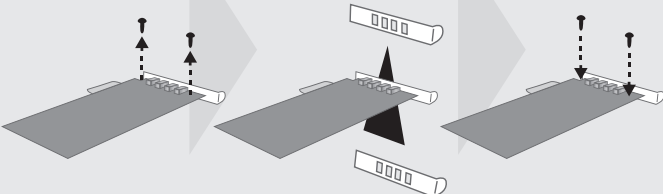
3. Locate a free PCIe expansion slot and remove the metal L bracket cover plate



7. Reattach the power to the Computer System and power ON the system.



8. Once the computer is powered ON, the system will auto detect and install the necessary built-in drivers from the OS. You do not need other drivers.



4. a) Using Full Height System bracket:
Since the expansion card comes with the full height metal L bracket, you do not have to change the metal bracket.

b) Using Low Profile system bracket:
Remove the two screws holding the metal L bracket on the expansion card, remove the full height bracket, replace with low profile bracket and secure back the screws.



9. Your device is now ready for use.