

Thank You

For Choosing VantecUSA Product.

We are committed to providing you with the best service and support. If you have a problem with installing, getting the product to function or other product related question, please feel free to write to us. We will help you answer your question.

You can write to us at :

support@vantecusa.com

For the latest Drivers, Manual and Frequently Asked Questions (FAQ), they are available at our website at vantecusa.com or write to us.

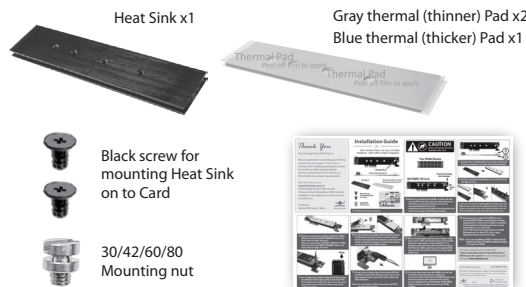
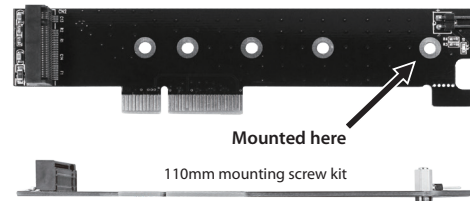
Thank you,
VantecUSA Support Team.



Installation Guide



M.2 NVMe PCIe x4 Low Profile Adapter with 110 Length Support



1. Verify the package contents.

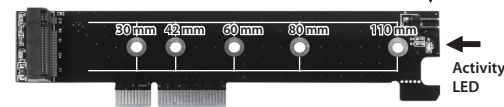


Your NVMe Module

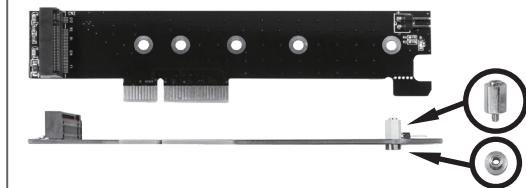


Front Panel Activity LED Connector

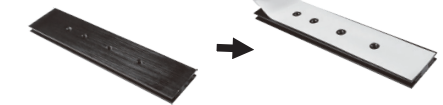
UGT-M2PC130 Card



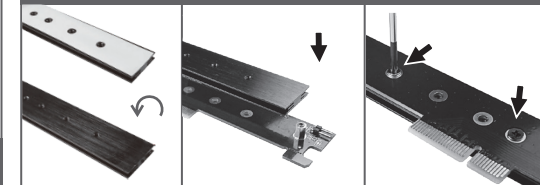
2. Before you unpack your NVMe module and take out the PCB from the enclosure, please be aware that these are sensitive devices and can be damaged by Static Electricity. Please ground yourself before handling them and hold by the edge of the PCB and module.



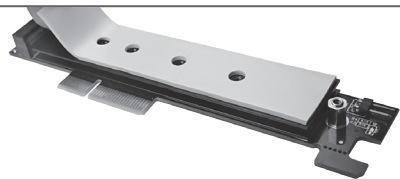
1. Lock the silver stand-off and brass nut on the 110mm hole location in preparation to secure the M.2 NVMe Module.



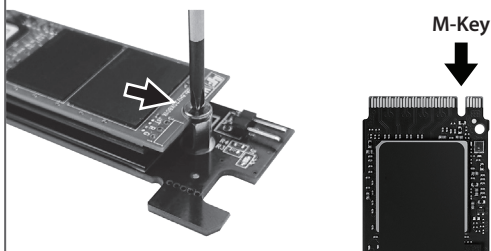
2. Attach the gray thermal pad (thinner) on to the heat sink and align the holes.



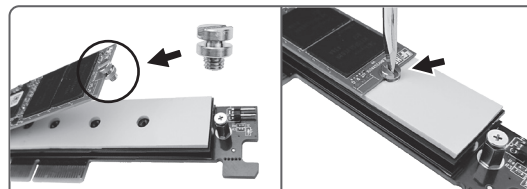
3. Turn over the heat sink with padded side facing the card. Align the hole and attach the padded heat sink on the card. Secure the heat sink to the card using two black screws on 2230 and 2280 hole position from the back of the card.



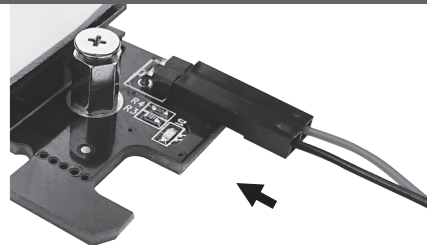
4. If you are mounting a SINGLE-SIDED M.2 NVMe Module, attach the BLUE THERMAL PAD to the heat sink and align the holes. If you are mounting a DOUBLE-SIDED M.2 NVMe Module, attach the GRAY THERMAL PAD to the heat sink and align the holes.



5. For 110mm size module: Align the M-Key of your M.2 Module in the right position and insert the M.2 module at an angle into the connector, push down and secure using the silver screw at the 110mm position.

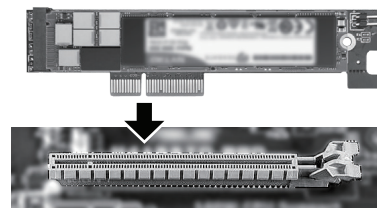


6. For 30 to 80mm size module: Align the M-Key of your M.2 Module in the right position and insert the M.2 module at an angle into the connector, push down and secure using the mounting nut to the position based on the size of your M.2 NVMe module.



7. If your system chassis has a front panel LED that you like to extend the LED from this card to your front panel, connect your LED cable to this card LED connector.

Note: the orientation of the connection and PLUS (positive pin) location.



8. When installing this card into your system, make sure power is OFF and system power cord unplug from your wall outlet. Locate a free PCIe x16 expansion slot and insert this new PCIe card into the PCIe slot. Make sure the card is seated all the way into the slot and the x16 slot card lock latch to the card.



9. If you are planning to use the NVMe to boot and install the Operating System, follow the instructions that come with the NVMe Module and from the motherboard manufacturer. It may involve changing the motherboard CMOS (BIOS Setup) setting to enable booting from NVMe module.

10. Preparing the installed M.2 NVMe for use: All brand NEW NVMe module (blank module) storage device needs to be initialized, partition and formatted for Operating System you are using before it can store data. For the Windows Operating System, use Disk Management, for other OS, refer to your Operating System manual for help.

NOTE : If you are installing a USED module already loaded with data, DO NOT initialize, Partition or Format the NVMe.

For detail, instruction refers to the FAQ "How to preparing a New storage, Hard Drive, or SSD for use with a system" on our website support section at www.vantecusa.com

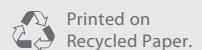
www.vantecusa.com

UGT-M2PC130

Information in this document is subject to change without notice. Reproduction of these materials in any manner whatsoever without written permission is strictly forbidden.



v1.01



Copyright © 2019 Vantec Thermal Technologies. All Rights Reserved. All Registered Trademarks Belong to Their Respective Companies.