

Thank You

For Choosing VantecUSA Product.

We are committed to providing you with the best service and support. If you have a problem with installing, getting the product to function or other product related question, please feel free to write to us. We will help you answer your question.

You can write to us at :

support@vantecusa.com

For the latest Drivers, Manual and Frequently Asked Questions (FAQ), they are available at our website at vantecusa.com or write to us.

Thank you,
VantecUSA Support Team.



Installation Guide



M.2 NVMe PCIe x4 Adapter with RGB Heat Sink

1. Verify the package contents.



Your NVMe Module



UGT-M2PC12-RGB

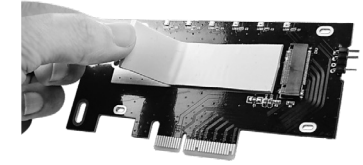


2. Before you unpack your NVMe module and take out the PCIe card, please be aware that these are sensitive devices and can be damaged by Static Electricity. Please ground yourself before handling them and hold it by the edge of the PCB and PCIe card.

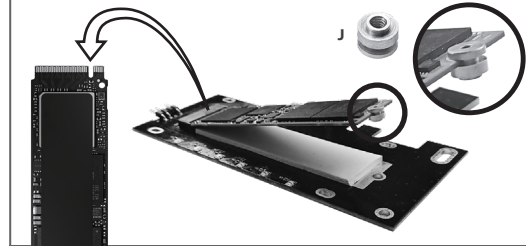
Note: If your NVMe is double-sided, please use the Thinner Gray Thermal Pad (H)



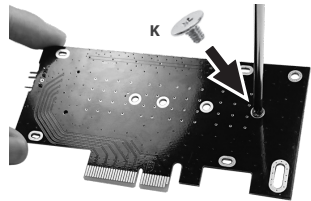
If your NVMe is single-sided, please use the Thicker Gray Thermal Pad (G)



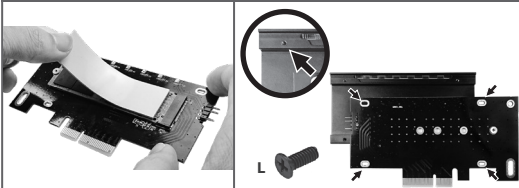
3. Remove the two plastic wrap on the Gray Thermal Pad and apply the pad on the heat transfer coating on the card.



4. Align your M.2 Module with the M-Key interface to the RGB card M.2 connector, insert your NVMe module into the connector, put on the M.2 holding Nut (J) on your NVMe as shown.

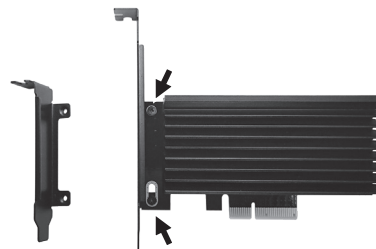


5. Push down and secure from the back of the card using Screw (K) onto the M.2 holding Nut (J) on Step #4.

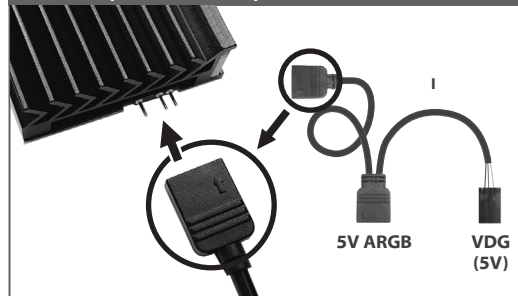


6. The Blue Thermal Pad comes in two thickness, (E) Thick Blue Thermal Pad, (F) Thin Blue Thermal Pad, please use the right pad according to the height of your M.2 SSD for proper Thermal Management. Select the right pad and apply the Blue Thermal Pad on top of your M.2 module.

7. Align the screw holes of the heatsink and the card. Install the heatsink on top of the assembled NVMe module and secure with the 4 screws (L) from the back of the card onto the heatsink.

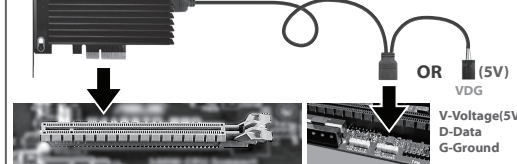


8. If your system is a low profile chassis and requires to replace the standard bracket to a Low Profile Bracket, remove the two screws holding the standard bracket and replace it with the provided Low Profile Bracket.



9. Connect the 3-pin ARGB cable (I) to the card. The other end of the ARGB cable connector is for the motherboard in the next installation step.

Connect to the Motherboard using either the 5V ARGB header OR the VDG(5V) header



10. When installing this card into your system, make sure power is OFF and system power cord unplug from your wall outlet. Locate a free PCIe x4 or x8 or x16 expansion slot and insert this new PCIe card into the PCIe slot. Make sure the card is seated all the way into the slot and secure the card. Connect the other end of the ARGB cable using either 5V ARGB OR 5V VDG to the motherboard header.



11. If you are planning to use the NVMe to boot and install the Operating Systems, follow the instruction that comes with the NVMe Module. It may involve changing the CMOS (BIOS Setup) setting to enable booting from the NVMe using UEFI.

Note: All newer Storage need to be prep using Operating System tools to initialize, Partition and Format the NVMe before use.

12. Preparing the newly installed M.2 NVMe for use:

All new USB storage device needs to be initialized, partition and formatted for the Operating System you are using before it can store data.

For the Windows Operating System, use Disk Management.

For detail, instruction refers to the FAQ "How to preparing a New storage, Hard Drive, or SSD for use with a system" on our website support section at www.vantecusa.com

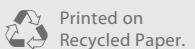
www.vantecusa.com

UGT-M2PC12-RGB

Information in this document is subject to change without notice. Reproduction of these materials in any manner whatsoever without written permission is strictly forbidden.



v1.01



Copyright © 2019 Vantec Thermal Technologies. All Rights Reserved. All Registered Trademarks Belong to Their Respective Companies.