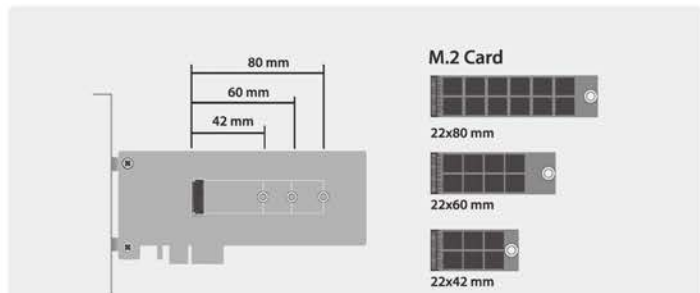
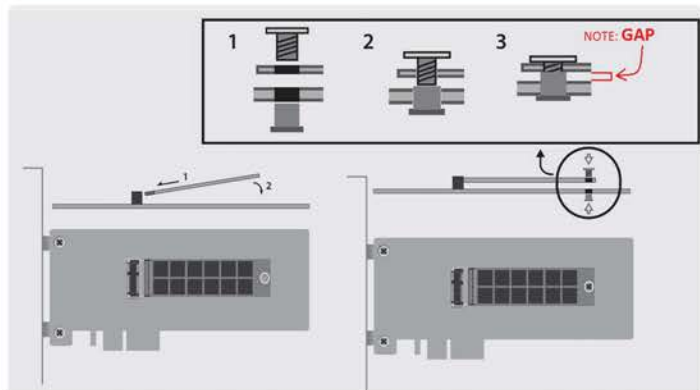


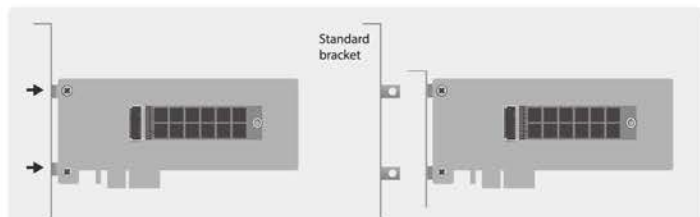
### 1. Verify the package contents.



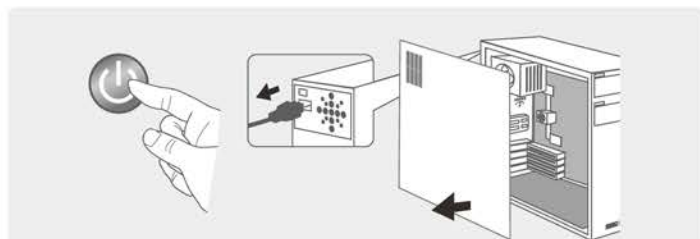
### 2. M.2 card comes in different length and size (42,60,80mm), match your M.2 card length to the hole alignment to decide which mounting hole to use.



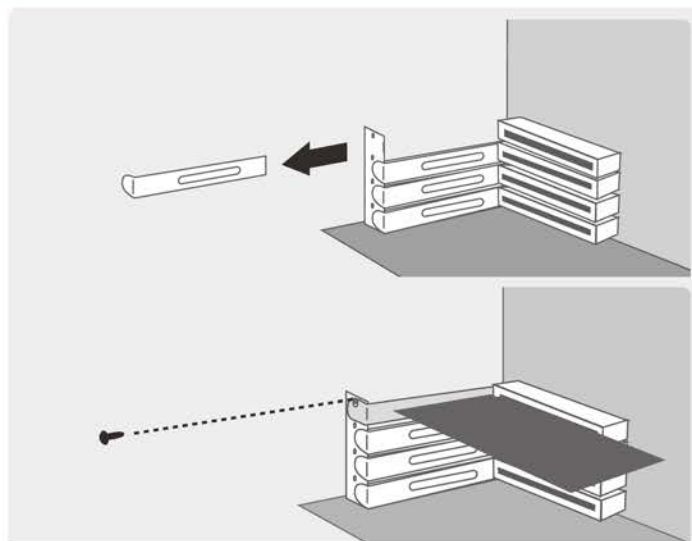
### 3. Attached M.2 Card by inserting the M.2 Card and secure using the washer and screw to hold the M.2 card in place.



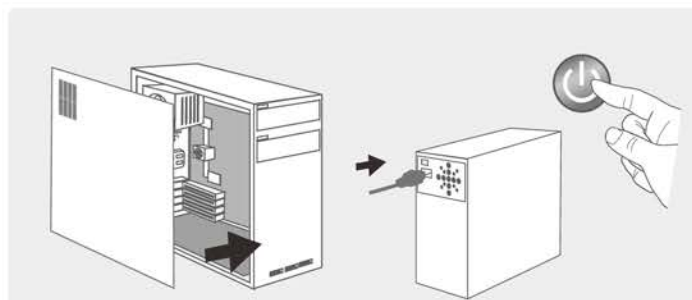
### 4. The card is ready to be integrated into your system. If you are adding this card into Slim or Low Profile System, please replace the standard bracket with a Low Profile Bracket and secure back the two screws hold the bracket.



### 5. Turn off Computer System, unplug power and remove the cover of the Computer System



### 6. a) Locate a free PCIe x4, x8 or x16 expansion slot and remove the plate covering the back aligned with the PCIe slot. b) Insert the card into the PCIe slot securely and fasten the bracket as documented in the computer system manufacturer's documentation.

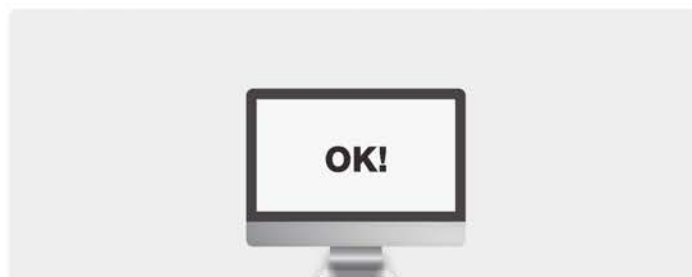


### 7. Place the case cover back on the computer system. Reattach the power to the Computer System and power ON the system.



### 8. a) If you are planning the use NVMe to boot and install the Operating System, follow the instructions that comes with your NVMe SSD. It may involve changing the CMOS (BIOS setup) setup setting to enable booting from NVMe device.

Note: All newer SSD need to be prep using Operating System tools initialize, partition and format drive before use.



### 9. Your device is now ready for use.