

Revised to Toolless

Thank You

For Choosing VantecUSA Product.
 We are committed to providing you with the best service and support. If you have a problem with installing, getting the product to function or other product related question, please feel free to write to us. We will help you answer your question.

You can write to us at : support@vantecusa.com
 For the latest Drivers, Manual and Frequently Asked Questions (FAQ), they are available at our website at vantecusa.com or write to us.



QRCode to product Page, Drivers, Manual, and FAQ.

Thank you,
 VantecUSA Support Team.



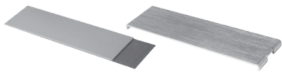
Installation Guide



Bag-1
 + Rubber Mount x3



Bag-2
 + Thermal pad x1
 + Aluminum heat sink x1



1. Verify the package contents.
 If there is anything short, please let us know within 2 weeks.
 Note: Only 1 Rubber Mount is needed to mount your M.2 NVMe, 2 spares are provided.

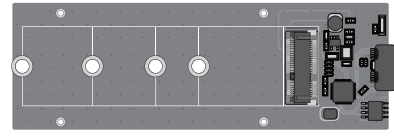
CAUTION

Static Sensitive Devices
Handle with Care

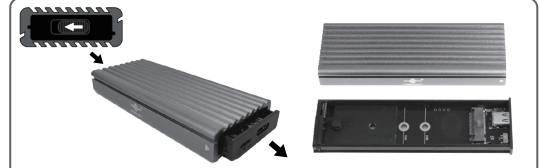
Your NVMe Module



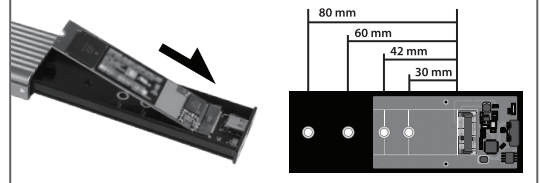
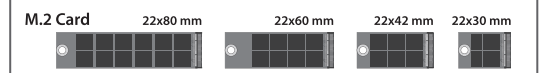
Printed Circuit Board



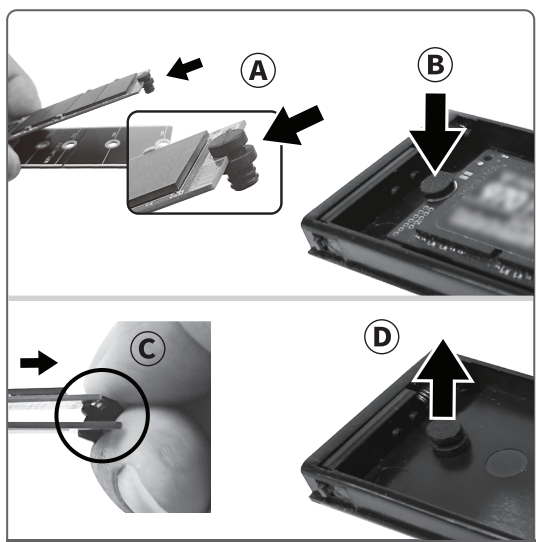
2. Before you unpack your NVMe module and take out the tray with the PCB from the enclosure, please be aware that these are sensitive devices and can be damaged by Static Electricity. Please ground yourself before handling them and hold them by the edge of the module.



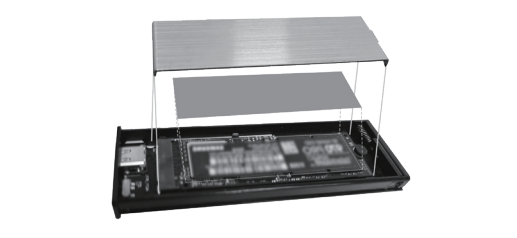
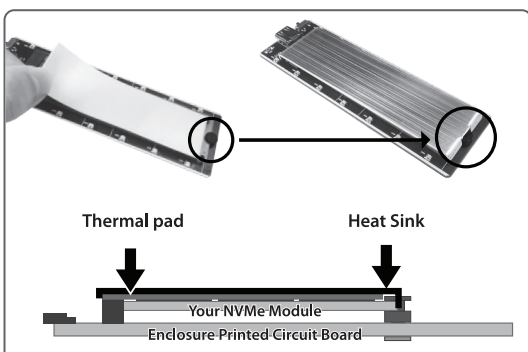
3. To remove the Tray, look at the end of the unit, you will see a slider lock, push the spring slider lock to the left to slide out the Tray on the opposite side.



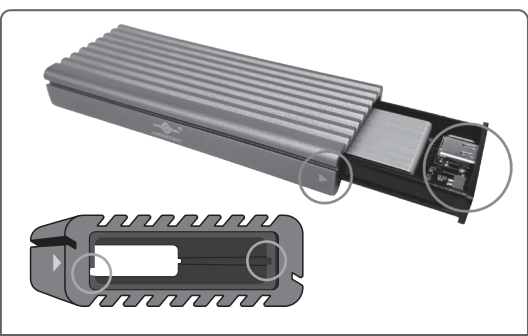
4. Your M.2 NVMe module may come in different lengths. Connect your M.2 NVMe module at an angle into the M.2 interface on the Tray PCB. Your M.2 NVMe module is keyed and can only insert into the interface with the label facing up. If you are NOT using M.2 NVMe module, you are using the WRONG product. Please write to support@vantecusa.com for help.



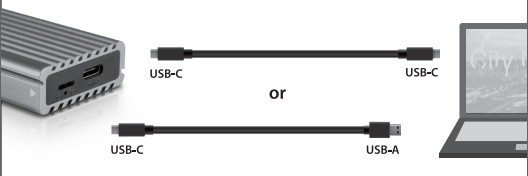
5. Insert the Rubber Mount onto your M.2 NVMe module shown in A. Push it down onto the hole on the Tray shown in B.
 If you need to remove your module for any reason, just peel back the Rubber Mount far enough for your NVMe module to come off shown in C. To remove the Rubber Mount, use your finger to pull straight up and out as shown in D.



6. Peel the protective film off both sides of the thermal pad and apply it to the top of the mounted M.2 NVMe module.
 7. Align the heat sink with the top of the Rubber Mount and place it on top of the thermal pad shown.



8. Before inserting back the Tray, align the position of the glide track on the casing to the Tray. The Tray will slide in and latch back in place via the spring slider lock.



9. For your convenience, we have provided two cables. You may use either cable to connect between your system and the enclosure depending on the type of USB port on your system.

10. Preparing the M.2 NVMe for use.
IMPORTANT NOTE:
 If this is a used M.2 NVMe and there are important data on the drive, DO NOT initialize, partition, or format the drive.
 If this is new, this new USB storage device will need to be initialized, partitioned, and formatted for the Operating System you are using before they can store data. For the Windows Operating System, use disk Management and for OS X, use Disk Utility.

For detail, instruction refers to the FAQ "How to preparing a New storage, Hard Drive, or SSD for use with a system" on our website support section at www.vantecusa.com

www.vantecusa.com NST-205C3-SG

Information in this document is subject to change without notice. Reproduction of these materials in any manner whatsoever without written permission is strictly forbidden.

1. Verify the package contents.
Note: Only one screw and one screw nut are needed. The extras are spares.

Bag-1
 + Screw Driver x1
 + Screw x2 (for M.2)
 + Screw Nut x2 (for M.2)
 + Screw x3 (for Case Plate Cover)

Bag-2
 + Thermal pad x1
 + Aluminum heat sink x1

CAUTION
 Static Sensitive Devices
 Handle with Care

Your NVMe Module

Printed Circuit Board

2. Before you unpack your NVMe module and take out the PCB from the enclosure, please be aware that these are sensitive devices and can be damaged by Static Electricity. Please ground yourself before handling them and hold by the edge of the PCB and module.

Screw Hole

Glide Track

Type-C

3. Remove the plate and slide out the Printed Circuit Board (PCB) by the side edge. NOTE the glide track the PCB is seating on when sliding out. This is the same glide track for putting back the PCB later.

M.2 Card

22x80 mm

22x60 mm

22x42 mm

80 mm

60 mm

42 mm

4. Your M.2 NVMe module may come in different length. Connect your M.2 module at an angle into the M.2 interface on the PCB. Your M.2 NVMe module is keyed (M Key only) and can only insert into the interface with the label facing up.

Your NVMe Module

Enclosure Printed Circuit Board

5. Use the screw nut provided, insert into the semi-circular notch of your M.2 module, press down the M.2 module and secure the M.2 screw nut using the screw from the underside. NOTE the orientation of the screw nut.

Thermal pad

Heat Sink

Your NVMe Module

Enclosure Printed Circuit Board

6. Peel the protecting film off both sides of the thermal pad and apply it on to the top of the mounted M.2 NVMe module.

7. Align the heat sink with the notch to the screw nut and place it on top of the thermal pad.

Inserted into Enclosure

8. Insert the PCB back into glide track the same way it was removed in step 3 earlier.

9. Align the cover and make sure the USB-C port and the Lock Switch are exposed correctly, Install the cover and secure the two cover screws.

10. Preparing the newly installed M.2 NVMe for use:

All new USB storage device needs to be initialized, partition and formatted for the Operating System you are using before it can store data.

For the Windows Operating System, use Disk Management and for OS X, use Disk Utility.

For detail, instruction refers to the FAQ "How to preparing a New storage, Hard Drive, or SSD for use with a system" on our website support section at www.vantecusa.com