



Thunderbolt™ 3 Multi-Function Docking Station with PD 60W



User Manual

DSH-400TB3

Table of Contents

SAFETY INSTRUCTIONS	1
COPYRIGHT, TRADEMARKS	1
REGULATORY COMPLIANCE	2
FCC CONDITIONS, CE	2
WEEE INFORMATION	2
INTRODUCTION	3
FEATURES	4
PACKAGE CONTENTS	4
SYSTEM REQUIREMENTS	4
PRODUCT OVERVIEW	5
CONNECTION	7
DISPLAY CONFIGURATION	8
MULTI-MONITOR CONFIGURATION	8
EXTEND MODE	9
MIRROR MODE	10
SET THE PRIMARY MONITOR	10
MAC OS	11
AUDIO CONFIGURATION	12
SPECIFICATION	13
TECHNICAL SUPPORT	14

Before attempting to connect, operate or adjust this product, please save and read the User's Manual completely. The style of the product shown in this User's Manual may be different from the actual unit due to various models.

Safety Instructions

Always read the safety instructions carefully:

- ◆ Keep this User's Manual for future reference
- ◆ Keep this equipment away from humidity
- ◆ If any of the following situation arises, get the equipment checked by a service technician:
 - The equipment has been exposed to moisture.
 - The equipment has been dropped and damaged.
 - The equipment has obvious sign of breakage.
 - The equipment has not been working well or cannot get it to work according to the User's Manual.

Copyright

This document contains proprietary information protected by copyright. All right are reserved. No part of this manual may be reproduced by any mechanical, electronic or other means, in any form, without prior written permission of the manufacturer.

Trademarks

All trademarks and registered trademarks are the property of their respective owners or companies.

Regulatory Compliance

FCC Conditions

This equipment has been tested and found to comply with Part 15 Class B of the FCC Rules. Operation is subject to the following two conditions: (1) This device may not cause harmful interference. (2) This device must accept any interference received and include interference that may cause undesired operation.

CE

This equipment is in compliance with the requirements of the following regulations: EN 55032/EN 55024: CLASS B

WEEE Information

For EU (European Union) member users: According to the WEEE (Waste electrical and electronic equipment) Directive, do not dispose of this product as household waste or commercial waste.

Waste electrical and electronic equipment should be appropriately collected and recycled as required by practices established for your country.

For information on recycling of this product, please contact your local authorities, your household waste disposal service or the shop where you purchased the product.



Introduction

The Vantec Thunderbolt 3 Multi-Function Docking Station is designed for extra connectivity demands. With this docking station, you can extend the connection of a computer to more USB peripherals such as Ethernet network, the speaker and the microphone. Adopting PD Charging technology, upstream charging function through Thunderbolt interface, you can charge the laptop. In addition, you do not need to any drivers. Just plug and play; then you are connected with Thunderbolt embedded device.

The docking station is also equipped with video output. With HDMI port, you can mirror your primary screen or extend the desktop allowing visibility of more applications at the same time. With enhanced expansion capability and video output function, this docking station is the most versatile accessory that also complements your home or office space.

- *Incorporates HDMI® technology.*

Features

- ◆ Slim and fashionable design
- ◆ Thunderbolt 3 technology
- ◆ Upstream Port
 - Type-C Thunderbolt 3
- ◆ Downstream Port
 - USB 3.0 Type-A female x5 (One port supports BC 1.2)
- ◆ Video output
 - HDMI output supports resolution up to 4K@60Hz
- ◆ LAN
 - RJ45 Gigabit Ethernet
- ◆ Upstream PD Charging: 5/9/15/20V, up to 60W
- ◆ Combo audio jack
- ◆ Support SD 3.0 card reader

Package Contents

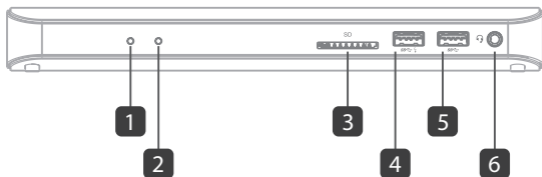
- | | |
|---------------------------------|----|
| ◆ Thunderbolt 3 Docking Station | x1 |
| ◆ Cable | x1 |
| ◆ Power Adapter(20V/6.75A) | x1 |
| ◆ User's Manual | x1 |

System Requirements

- ◆ Supported Operating System
 - Windows® 10
 - Mac OS®

Product Overview

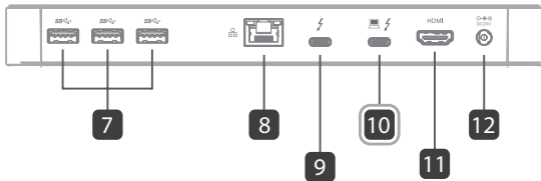
Front



Item	Description
1. Power indicator	Indicator shows green when power on
2. Thunderbolt 3 link indicator	Indicator shows blue when Thunderbolt embedded device is connected
3. SD 3.0 card reader	Copy data, photos, songs, videos and movies from SD card with high speed transmission
4. USB 3.0 Type-A	Connect to USB 3.0 devices and this port Support BC 1.2
5. USB 3.0 Type-A	Connect to USB 3.0 devices
6. Combo Audio Jack	Connect to a headset

Product Overview

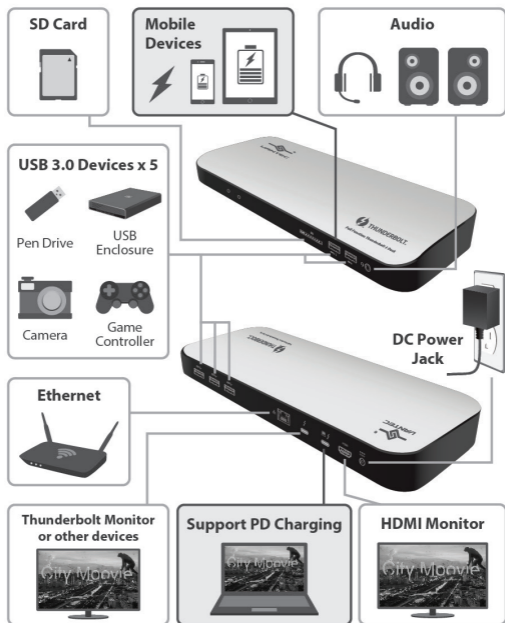
Rear



Item	Description
7. USB 3.0 Type-A	Connect to USB 3.0 devices
8. RJ45 port	Connect to an Ethernet
9. Thunderbolt 3 port	Connect to the USB-C port of a computer/laptop
10. Thunderbolt 3 port	Connect to the USB-C port of a computer/laptop (only this port supports PD charging)
11. HDMI port	Connect to a HDMI monitor
12. Power jack	Connect to the power adapter

Connection

To connect the USB peripherals, Ethernet, speaker and microphone, follow the illustrations below to connect the corresponding connectors.



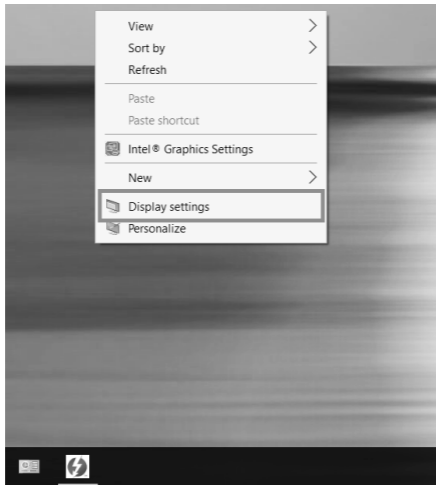
Display configuration

Multi-monitor configuration

Once the extra monitors are connected, they can be configured to either **Mirror mode**, **Extend mode** or set the **primary display**.

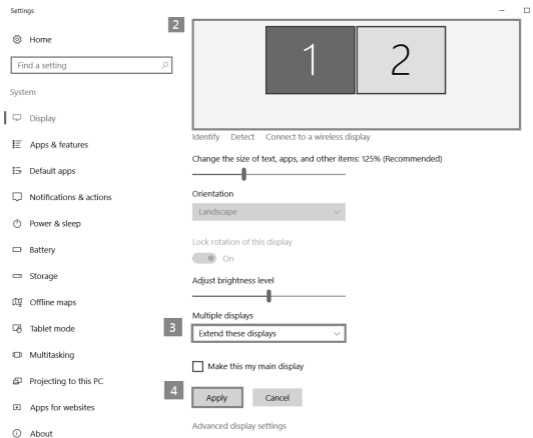
Windows® OS

Position the mouse anywhere on the **Windows Desktop**, Right-click and select **Display Settings**.



Extend mode

1. Refer to the **Multi-monitor configuration** section to bring up the configuration window.
2. Select the preferred monitor at top of the page.
3. Select **Multiple Displays > Extend these displays**.
4. Click **Apply** to confirm and exit.



5. Once the setting is completed, simply drag and drop the application icons or the opened windows to the add-on monitor. However, some applications may not support to display on the extended desktop.

Troubleshooting

a. Cursor disappeared

If the status remains in the extended mode but the docking station is disconnected, the desktop will still be panned to the add-on monitor. The cursor may not be found on the primary monitor in such a case. If it happens, connect the add-on monitor through the docking station again or keep moving the mouse.

b. Video playback in extended mode

If the video or DVD playback quality is poor or low performance in extended mode, please playback it on the primary monitor instead of the add-on monitor.

Mirror mode

1. Refer to the **Multi-monitor configuration** section to bring up the configuration window.
2. Select the preferred monitor at top of the page.
3. Select **Multiple Displays > Duplicate these displays**.
4. Click **Apply** to confirm and exit.

Set the primary monitor

1. Refer to the **Multi-monitor configuration** section to bring up the configuration window.
2. Select the preferred monitor at top of the page.
3. Check the box of **Make this my main display**.

NOTE: For some computers, you may need to disable the main display by unchecking the box of Extend the desktop onto this monitor or Extend my Windows desktop onto this monitor.

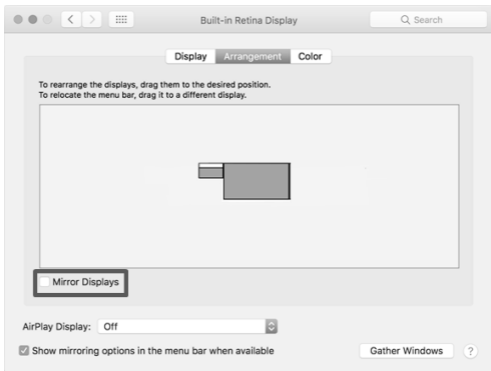
4. Click **Apply** to confirm and exit.

Mac OS®

1. Click on the **Apple** sign at the top left corner of the screen and select **System Preferences.../ Displays**.
2. To rearrange the displays, drag them to the desired position.

To relocate the menu bar, drag it to a different display.

To switch to **Mirror Mode**, tick the box in front of **Mirror Displays**.



Audio configuration

By default, when the docking station is connected to a computer, the audio configuration may be changed to **USB (Multimedia) Audio Device** automatically (this setting depends on models). If it does not work, follow the steps below to setup.

1. Open **Control Panel** and then select the hardware and sound icon.
2. Click **Sound > Manage audio devices** and then select **USB Audio Device**.



Specification

User Interface	Upstream	Type-C Thunderbolt 3 x2 (only one port supports PD charging)
	Downstream	HDMI female connector x1
		USB 3.0 female connector x5 , one port supports BC 1.2
		RJ45 connector x1
	Combo Audio Jack (IN/OUT) x1	
Video	Resolution	HDMI2.0: 4K@60Hz
Audio	Channel	2.1 CH
Ethernet	Type	10/100/1000 BASE-T
Power	Power Mode	AC powered
	Power Adapter	Input: AC 100-240V
Output: DC 20V/6.75A		
Working Environment	Operation Temperature	0~40 degree
	Storage Temperature	-20~70 degree
Compliance		CE, FCC

Technical Support

Thank you for your purchased products and complete sales services. We look forward to your comments to provide you with better service.

If you have any technical or application issues about our products, please contact us through Vantec Website at:

<http://www.vantecusa.com>

Simply fill in the required information on the website and submit your question to us. We will reply to you as soon as possible.



V1.2